

Aseptic clamping connections Tri-Clamp

Suitable for 10 to 25 bar operating pressure (PN 10 to PN 25)

Safety clamps with aseptic clamping connections according to DIN 32676 (pipe series A, B, C) as well as according to BS 4825 and ISO 2852

Material: Stainless steel

Other connections upon request



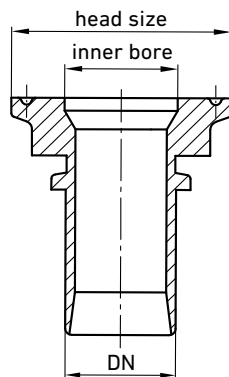
Safety clamps, pipe series A

according to EN 14420 aseptic clamping connections according to DIN 32676

Article	DN	Head size [mm]	Internal bore
TCS	13	34.0	16
	19	34.0	20
	25	50.5	26
	32	50.5	32
	38	50.5	38
	50	64.0	50
	63	91.0	66
	75	106.0	81
	100	119.0	100

Safety clamps, pipe series A/B

according to EN 14420 aseptic clamping connections according to DIN 32676. Pipe series C upon request.



Safety clamps, pipe series B

according to EN 14420 aseptic clamping connections according to DIN 32676

Article	DN Socket	Head size [mm]	Internal bore
TCS	13	50.5	18.1
	19	50.5	23.7
	25	50.5	29.7
	32	64.0	38.4
	38	64.0	44.3
	50	77.5	56.3
	63	91.0	72.1
	75	106.0	84.3

Surface quality DIN 11864-1 (Ra in µm)

Hygiene class	Internal surface	External surface
H3	< 0.8	< 1.0
H4	< 0.4	< 1.0

More safety clamps with aseptic connections according to DIN 11864 (-1,-2,-3) in pipe series A, B and C.

Our fittings are made of stainless steel according to DIN 11864-1, optionally in hygiene classes H3 or H4



Safety clamps PN 25

According to EN 14420 with aseptic liner, according to DIN 11864-1, pipe series A with union nuts

Article	DN	Thread
ASM13A	13	Rd. 34x1/8"
ASM19A	19	Rd. 44x1/6"
ASM25A	25	Rd. 52x1/6"
ASM32A	32	Rd. 58x1/6"
ASM38A	38	Rd. 65x1/6"
ASM50A	50	Rd. 78x1/6"
ASM65A	63	Rd. 95x1/6"
ASM75A	75	Rd. 110x1/4"
ASM100A	100	Rd. 130x1/4"



Safety clamps PN 25

according to EN14420 with aseptic threaded connector according to DIN 11864-1, pipe series A

Article	DN	Thread
ASV13A	13	Rd. 34x1/8"
ASV20A	19	Rd. 44x1/6"
ASV25A	25	Rd. 52x1/6"
ASV32A	32	Rd. 58x1/6"
ASV38A	38	Rd. 65x1/6"
ASV50A	50	Rd. 78x1/6"
ASV65A	63	Rd. 95x1/6"
ASV75A	75	Rd. 110x1/4"
ASV100A	100	Rd. 130x1/4"



Safety clamps PN 10 to PN 25 nominal width-dependent, according to EN 14420 with aseptic collar flange according to DIN 11864-2, pipe series A

Article	DN	Flange size [mm]
ASFB13A	13	59.0
ASFB19A	19	64.0
ASFB25A	25	70.0
ASFB32A	32	76.0
ASFB38A	38	82.0
ASFB50A	50	94.0
ASFB65A	63	113.0
ASFB75A	75	133.0
ASFB100A	100	159.0



Safety clamps PN 10 to PN 25 nominal width-dependent, according to EN 14420 with aseptic groove flange according to DIN 11864-2, pipe series A

Article	DN	Flange size [mm]
ASFN13A	13	59.0
ASFN19A	19	64.0
ASFN25A	25	70.0
ASFN32A	32	76.0
ASFN38A	38	82.0
ASFN50A	50	94.0
ASFN65A	63	113.0
ASFN75A	75	133.0
ASFN100A	100	159.0



Safety clamps, PN 16 to PN 40 according to EN 14420 with aseptic clamp ferrule with groove according to DIN 11864-3

Article	DN
ASNKS13A	13
ASNKS20A	19
ASNKS25A	25
ASNKS32A	32
ASNKS38A	38
ASNKS50A	50
ASNKS65A	63
ASNKS75A	75
ASNKS100A	100



Safety clamps PN 16 to PN 40 according to EN14420 with aseptic clamp ferrule according to DIN 11864-3

Article	DN
ASBK13A	13
ASBK19A	19
ASBK25A	25
ASBK32A	32
ASBK38A	38
ASBK50A	50
ASBK65A	63
ASBK75A	75
ASBK100A	100