

Lever arm couplings according to EN 14420-7 with lever arm lock

A coupling with an additional lock for the lever arms is a further development of the normal lever arm coupling. Different versions are known on the market, but Autolok® and Saflok™ are probably the most common ones internationally due to their functions integrated in the lever.

The lever arms cannot open by themselves. You must also pull at two rings fastened at the lever arms in order to allow for opening of the fitting. In this way, a lock between fitting body and lever is released by means of spring technology.

As male parts, the standard fittings are used so that in case of conversion in order to reach a higher safety standard, only the female parts need to be exchanged.

Apart from that, we offer the PTFE-lined variant, see page 74.

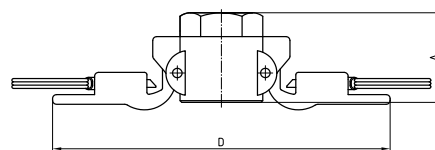
According to EN 14420-7 up to PN 16

System seals: CSM
Thread seals: PTFE

Thread: G = ISO 228-1, R = ISO 7-1

Lever arm coupling

Female part with internal thread and lever arm lock



Article	Nominal width	A	D
KKSD34	20–3/4"	46.5	110
KKSD10	25–1"	54	125
KKSD32	32–1 1/4"	61	180
KKSD38	38–1 1/2"	67	190
KKSD20	50–2"	75	200
KKSD65	65–2 1/2"	77.5	210
KKSD30	80–3"	83	250
KKSD40	100–4"	85.5	290



Female coupling with ISO 228-1 internal thread and lever arm lock

Order number	Size	Thread	Operating pressure [bar]	Material
KKSD 34 SS	DN 20–3/4"	G 3/4	16	SS
KKSD 10 SS	DN 25–1"	G 1	16	SS
KKSD 32 SS	DN 32–1 1/4"	G 1 1/4	16	SS
KKSD 38 SS	DN 40–1 1/2"	G 1 1/2	16	SS
KKSD 20 SS	DN 50–2"	G 2	16	SS
KKSD 65 SS	DN 65–2 1/2"	G 2 1/2	16	SS
KKSD 30 SS	DN 80–3"	G 3	16	SS
KKSD 40 SS	DN 100–4"	G 4	16	SS



Female coupling with hose fitting according to DIN EN 14420-2 and lever arm lock

Order number	Size	DN [mm]	Operating pressure [bar]	Material
KKSCS 34 SS	DN 20–3/4"	19	16	SS
KKSCS 10 SS	DN 25–1"	25	16	SS
KKSCS 32 SS	DN 32–1 1/4"	32	16	SS
KKSCS 38 SS	DN 40–1 1/2"	38	16	SS
KKSCS 20 SS	DN 50–2"	50	16	SS
KKSCS 65 SS	DN 65–2 1/2"	63	16	SS
KKSCS 30 SS	DN 80–3"	75	16	SS
KKSCS 40 SS	DN 100–4"	100	16	SS



Female coupling with ISO 7-1 external thread and lever arm lock

Order number	Size	Thread	Operating pressure [bar]	Material
KKSB 34 SS	DN 20–3/4"	R 3/4	16	SS
KKSB 10 SS	DN 25–1"	R 1	16	SS
KKSB 32 SS	DN 32–1 1/4"	R 1 1/4	16	SS
KKSB 38 SS	DN 40–1 1/2"	R 1 1/2	16	SS
KKSB 20 SS	DN 50–2"	R 2	16	SS
KKSB 65 SS	DN 65–2 1/2"	R 2 1/2	16	SS
KKSB 30 SS	DN 80–3"	R 3	16	SS
KKSB 40 SS	DN 100–4"	R 4	16	SS



Caps with lever arm lock

Order number	Size	Operating pressure [bar]	Material
KKSDC 34 SS	DN 20–3/4"	16	SS
KKSDC 10 SS	DN 25–1"	16	SS
KKSDC 32 SS	DN 32–1 1/4"	16	SS
KKSDC 38 SS	DN 40–1 1/2"	16	SS
KKSDC 20 SS	DN 50–2"	16	SS
KKSDC 65 SS	DN 65–2 1/2"	16	SS
KKSDC 30 SS	DN 80–3"	16	SS
KKSDC 40 SS	DN 100–4"	16	SS