

Lever arm couplings according to EN 14420-7

The lever arm coupling is internationally the most frequently used quick coupling for the connection of hoses and pipelines. It is also referred to as Kamlok coupling. This fitting originally comes from an American military standard. The lever arm couplings are produced according to EN 14420-7, previously according to DIN 2828.

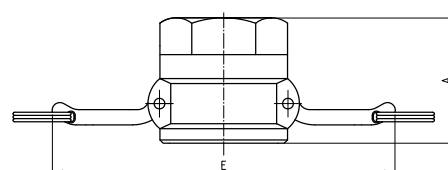
Due to the many different designs in the field of transportation of liquids and solids, the possible applications of Kamlok couplings are very diverse.

The system consists of a male part with a concave external contour, which is coupled in the female part by the movement of two concentric levers. Positioning of the coupling parts is not necessary and thus, fast and simple connection of the fittings is possible. The fitting is available in the nominal widths DN 13 to DN 100 made of the materials: stainless steel, brass, aluminium and plastic. Due to the international markets which often differ from the European standards with regard to dimension specification and quality, EN 14420-7-compliant design must particularly be ensured in the stainless steel area.

Apart from that, we offer the PTFE-lined variant (see page 74).

Lever arm coupling

Female part with internal thread



Article	Nominal width	A	E
KKD12	13–1/2"	43	103
KKD34	20–3/4"	46.5	110
KKD10	25–1"	54	125
KKD32	32–1 1/4"	61	180
KKD38	38–1 1/2"	67	190
KKD20	50–2"	75	200
KKD65	65–2 1/2"	77.5	210
KKD30	80–3"	83	250
KKD40	100–4"	85.5	290



Male coupling
with internal thread

Order number	Size	Operating pressure [bar]	Thread	Material
KKA 12 SS KKA 12 MS	DN 13–1/2"	16 16	G 1/2	SS MS
KKA 34 SS KKA 34 MS	DN 20–3/4"	16 16	G 3/4	SS MS
KKA 10 SS KKA 10 MS KKA 10 PP	DN 25–1"	16 16 6	G 1	SS MS PP
KKA 32 SS KKA 32 MS	DN 32– 1 1/4"	16 16	G 1 1/4	SS MS
KKA 38 SS KKA 38 MS KKA 38 PP	DN 40– 1 1/2"	16 16 6	G 1 1/2	SS MS PP
KKA 20 SS KKA 20 MS KKA 20 PP	DN 50–2"	16 16 6	G 2	SS MS PP
KKA 65 SS KKA 65 MS	DN 65– 2 1/2"	16 16	G 2 1/2	SS MS
KKA 30 SS KKA 30 MS	DN 80–3"	16 16	G 3	SS MS
KKA 40 SS KKA 40 MS	DN 100–4"	16 16	G 4	SS MS



Female coupling
with internal thread

Order number	Size	Operating pressure [bar]	Thread	Material
KKD 12 SS KKD 12 MS	DN 13–1/2"	16 16	G 1/2	SS MS
KKD 34 SS KKD 34 MS	DN 20–3/4"	16 16	G 3/4	SS MS
KKD 10 SS KKD 10 MS KKD 10 PP	DN 25–1"	16 16 6	G 1	SS MS PP
KKD 32 SS KKD 32 MS	DN 32– 1 1/4"	16 16	G 1 1/4	SS MS
KKD 38 SS KKD 38 MS KKD 38 PP	DN 40– 1 1/2"	16 16 6	G 1 1/2	SS MS PP
KKD 20 SS KKD 20 MS KKD 20 PP	DN 50–2"	16 16 6	G 2	SS MS PP
KKD 65 SS KKD 65 MS	DN 65– 2 1/2"	16 16	G 2 1/2	SS MS
KKD 30 SS KKD 30 MS	DN 80–3"	16 16	G 3	SS MS
KKD 40 SS KKD 40 MS	DN 100–4"	16 16	G 4	SS MS

According to EN 14420-7 for PN 6 to PN 16
with flat seal according to DIN EN 14420-5

Thread seals: Polyurethane
in case of stainless steel or PTFE
System seal: PUR
in case of stainless steel: CSM

Thread: G = ISO 228-1

Materials:
For the abbreviation, see Materials register

Other materials upon request



Lever arm couplings according to EN 14420-7



Male coupling
with external thread

Order number	Size	Operating pressure [bar]	Thread	Material
KKF 12 SS KKF 12 MS	DN 13–1/2"	16 16	R 1/2	SS MS
KKF 34 SS KKF 34 MS	DN 20–3/4"	16 16	R 3/4	SS MS
KKF 10 SS KKF 10 MS KKF 10 PP	DN 25–1"	16 16 6	R 1	SS MS PP
KKF 32 SS KKF 32 MS	DN 32– 1 1/4"	16 16	R 1 1/4	SS MS
KKF 38 SS KKF 38 MS KKF 38 PP	DN 40– 1 1/2"	16 16 6	R 1 1/2	SS MS PP
KKF 20 SS KKF 20 MS KKF 20 PP	DN 50–2"	16 16 6	R 2	SS MS PP
KKF 65 SS KKF 65 MS	DN 65– 2 1/2"	16 16	R 2 1/2	SS MS
KKF 30 SS KKF 30 MS	DN 80–3"	16 16	R 3	SS MS
KKF 40 SS KKF 40 MS	DN 100–4"	16 16	R 4	SS MS



Female coupling
with external thread

Order number	Size	Operating pressure [bar]	Thread	Material
KKB 12 SS KKB 12 MS	DN 13–1/2"	16 16	R 1/2	SS MS
KKB 34 SS KKB 34 MS	DN 20–3/4"	16 16	R 3/4	SS MS
KKB 10 SS KKB 10 MS KKB 10 PP	DN 25–1"	16 16 6	R 1	SS MS PP
KKB 32 SS KKB 32 MS	DN 32– 1 1/4"	16 16	R 1 1/4	SS MS
KKB 38 SS KKB 38 MS KKB 38 PP	DN 40– 1 1/2"	16 16 6	R 1 1/2	SS MS PP
KKB 20 SS KKB 20 MS KKB 20 PP	DN 50–2"	16 16 6	R 2	SS MS PP
KKB 65 SS KKB 65 MS	DN 65– 2 1/2"	16 16	R 2 1/2	SS MS
KKB 30 SS KKB 30 MS	DN 80–3"	16 16	R 3	SS MS
KKB 40 SS KKB 40 MS	DN 100–4"	16 16	R 4	SS MS

According to EN 14420-7 for PN 6 to PN 16 with conical external thread according to ISO 7-1

System seals: NBR
in case of stainless steel: CSM

Thread: R = ISO 7-1

Materials:
For the abbreviation, see Materials register

Other materials upon request





Male coupling with hose fitting
and safety collar according to DIN EN 14420-2

Order number	Size	Operating pressure [bar]	Material
KKES 12 SS KKES 12 MS	DN 13–1/2"	16 16	SS MS
KKES 34 SS KKES 34 MS	DN 20–3/4"	16 16	SS MS
KKES 10 SS KKES 10 MS KKES 10 PP	DN 25–1"	16 16 6	SS MS PP
KKES 32 SS KKES 32 MS	DN 32– 1 1/4"	16 16	SS MS
KKES 38 SS KKES 38 MS KKES 38 PP	DN 40– 1 1/2"	16 16 6	SS MS PP
KKES 20 SS KKES 20 MS KKES 20 PP	DN 50–2"	16 16 6	SS MS PP
KKES 65 SS KKES 65 MS	DN 65– 2 1/2"	16 16	SS MS
KKES 30 SS KKES 30 MS	DN 80–3"	16 16	SS MS
KKES 40 SS KKES 40 MS	DN 100–4"	16 16	SS MS



Female coupling with hose fitting
and safety collar according to DIN EN 14420-2

Order number	Size	Operating pressure [bar]	Material
KKCS 12 SS KKCS 12 MS	DN 13–1/2"	16 16	SS MS
KKCS 34 SS KKCS 34 MS	DN 20–3/4"	16 16	SS MS
KKCS 10 SS KKCS 10 MS KKCS 10 PP	DN 25–1"	16 16 6	SS MS PP
KKCS 32 SS KKCS 32 MS	DN 32– 1 1/4"	16 16	SS MS
KKCS 38 SS KKCS 38 MS KKCS 38 PP	DN 40– 1 1/2"	16 16 6	SS MS PP
KKCS 20 SS KKCS 20 MS KKCS 20 PP	DN 50–2"	16 16 6	SS MS PP
KKCS 65 SS KKCS 65 MS	DN 65– 2 1/2"	16 16	SS MS
KKCS 30 SS KKCS 30 MS	DN 80–3"	16 16	SS MS
KKCS 40 SS KKCS 40 MS	DN 100–4"	16 16	SS MS

According to EN 14420-7 for PN 6 to PN 16
with whose fitting for half-clamp cover

System seals: NBR
in case of stainless steel: CSM

Materials:
For the abbreviation, see Materials register

Other materials upon request



Lever arm couplings according to EN 14420-7



Male coupling
with fixed flange according to EN 1092-1

Order number	Size	Flange	Operating pressure [bar]	Material
KKLAS 12 ST KKLAS 12 SS	DN 13–1/2"	DN 15 PN 16	16 16	ST SS
KKLAS 34 ST KKLAS 34 SS	DN 20–3/4"	DN 20 PN 16	16 16	ST SS
KKLAS 10 ST KKLAS 10 SS	DN 25–1"	DN 25 PN 16	16 16	ST SS
KKLAS 32 ST KKLAS 32 SS	DN 32– 1 1/4"	DN 32 PN 16	16 16	ST SS
KKLAS 38 ST KKLAS 38 SS	DN 40–1 1/2"	DN 40 PN 16	16 16	ST SS
KKLAS 20 ST KKLAS 20 SS	DN 50–2"	DN 50 PN 16	16 16	ST SS
KKLAS 65 ST KKLAS 65 SS	DN 65–2 1/2"	DN 65 PN 16	16 16	ST SS
KKLAS 30 ST KKLAS 30 SS	DN 80–3"	DN 80 PN 16	16 16	ST SS
KKLAS 40 ST KKLAS 40 SS	DN 100–4"	DN 100 PN 16	16 16	ST SS



Female coupling
with fixed flange according to EN 1092-1

Order number	Size	Flange	Operating pressure [bar]	Material
KKLBS 12 SS	DN 13–1/2"	DN 15 PN 16	16	SS
KKLBS 34 SS	DN 20–3/4"	DN 20 PN 16	16	SS
KKLBS 10 SS	DN 25–1"	DN 25 PN 16	16	SS
KKLBS 32 SS	DN 32–1 1/4"	DN 32 PN 16	16	ST SS
KKLBS 38 SS	DN 40–1 1/2"	DN 40 PN 16	16	SS
KKLBS 20 SS	DN 50–2"	DN 50 PN 16	16	SS
KKLBS 65 SS	DN 65–2 1/2"	DN 65 PN 16	16	SS
KKLBS 30 SS	DN 80–3"	DN 80 PN 16	16	SS
KKLBS 40 SS	DN 100–4"	DN 100 PN 16	16	SS

According to EN 14420-7 up to PN 16 with fixed flanges according to EN 1092-1 or ASME B 16.1

System seals: CSM

Materials:

For the abbreviation, see Materials register

Other materials upon request





Plugs

Order number	Size	Operating pressure [bar]	Material
KKDP 12 SS KKDP 12 MS	DN 13–1/2"	16 16	SS MS
KKDP 34 SS KKDP 34 MS	DN 20–3/4"	16 16	SS MS
KKDP 10 SS KKDP 10 MS KKDP 10 PP	DN 25–1"	16 16 6	SS MS PP
KKDP 32 SS KKDP 32 MS	DN 32–1 1/4"	16 16	SS MS
KKDP 38 SS KKDP 38 MS KKDP 38 PP	DN 40–1 1/2"	16 16 6	SS MS PP
KKDP 20 SS KKDP 20 MS KKDP 20 PP	DN 50–2"	16 16 6	SS MS PP
KKDP 65 SS KKDP 65 MS	DN 65–2 1/2"	16 16	SS MS
KKDP 30 SS KKDP 30 MS	DN 80–3"	16 16	SS MS
KKDP 40 SS KKDP 40 MS	DN 100–4"	16 16	SS MS



Caps

Order number	Size	Operating pressure [bar]	Material
KKDC 12 SS KKDC 12 MS	DN 13–1/2"	16 16	SS MS
KKDC 34 SS KKDC 34 MS	DN 20–3/4"	16 16	SS MS
KKDC 10 SS KKDC 10 MS KKDC 10 PP	DN 25–1"	16 16 6	SS MS PP
KKDC 32 SS KKDC 32 MS	DN 32–1 1/4"	16 16	SS MS
KKDC 38 SS KKDC 38 MS KKDC 38 PP	DN 40–1 1/2"	16 16 6	SS MS PP
KKDC 20 SS KKDC 20 MS KKDC 20 PP	DN 50–2"	16 16 6	SS MS PP
KKDC 65 SS KKDC 65 MS	DN 65–2 1/2"	16 16	SS MS
KKDC 30 SS KKDC 30 MS KKDC 30 AL	DN 80–3"	16 16 10	SS MS AL
KKDC 40 SS KKDC 40 MS	DN 100–4"	16 16	SS MS

According to EN 14420-7 for PN 6 to PN 16

System seals: NBR
in case of stainless steel: CSM

Materials:
For the abbreviation, see Materials register

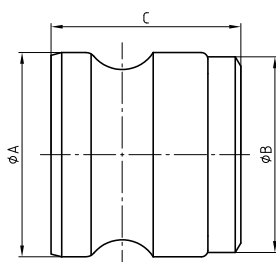
Other materials upon request



Lever arm couplings according to EN 14420-7

Lever arm coupling

Male part with weld-on chamfer according to ISO 1127



Article	Nominal width	Ø A	Weld-on dimension Ø B	C
KKAW34	20–3/4"	32.1	26.9x2.3	37
KKAW10	25–1"	36.7	33.7x2	43.5
KKAW32	32–1 1/4"	45.5	42.4x2.6	50
KKAW38	38–1 1/2"	53.4	48.3x2.6	51.5
KKAW20	50–2"	63	60.3x2.9	57.5
KKAW65	65–2 1/2"	75.8	75.8x2.9	59.5
KKAW30	80–3"	91.5	88.9x3.2	60
KKAW40	100–4"	119.5	114.3x3.6	65

According to EN 14420-7 up to PN 16 with weld-on ends according to ISO 1127

System seals: NBR
in case of stainless steel: CSM

Materials:
For the abbreviation, see Materials register

Other materials upon request



Female coupling

with weld-on ends according to ISO 1127

Order number	Size	Operating pressure [bar]	Material
KKDW 34 SS	DN 20–3/4"	16	SS
KKDW 10 SS	DN 25–1"	16	SS
KKDW 32 SS	DN 32–1 1/4"	16	SS
KKDW 38 SS	DN 40–1 1/2"	16	SS
KKDW 20 SS	DN 50–2"	16	SS
KKDW 65 SS	DN 65–2 1/2"	16	SS
KKDW 30 SS	DN 80–3"	16	SS
KKDW 40 SS	DN 100–4"	16	SS



Male coupling

with weld-on ends according to ISO 1127

Order number	Size	Operating pressure [bar]	Material
KKAW 34 ST	DN 20–3/4"	16	ST
KKAW 34 SS		16	SS
KKAW 10 ST	DN 25–1"	16	ST
KKAW 10 SS		16	SS
KKAW 32 ST	DN 32–1 1/4"	16	ST
KKAW 32 SS		16	SS
KKAW 38 ST	DN 40–1 1/2"	16	ST
KKAW 38 SS		16	SS
KKAW 20 ST	DN 50–2"	16	ST
KKAW 20 SS		16	SS
KKAW 65 ST	DN 65–2 1/2"	16	ST
KKAW 65 SS		16	SS
KKAW 30 ST	DN 80–3"	16	ST
KKAW 30 SS		16	SS
KKAW 40 ST	DN 100–4"	16	ST
KKAW 40 SS		16	SS